

# D-RATS FOR DATA

1010010010111011011001011011011011000101  
0111101101100101001010010110110010101101



Georgia  D-STAR  
John Davis, WB4QDX

# D-RATS Overview

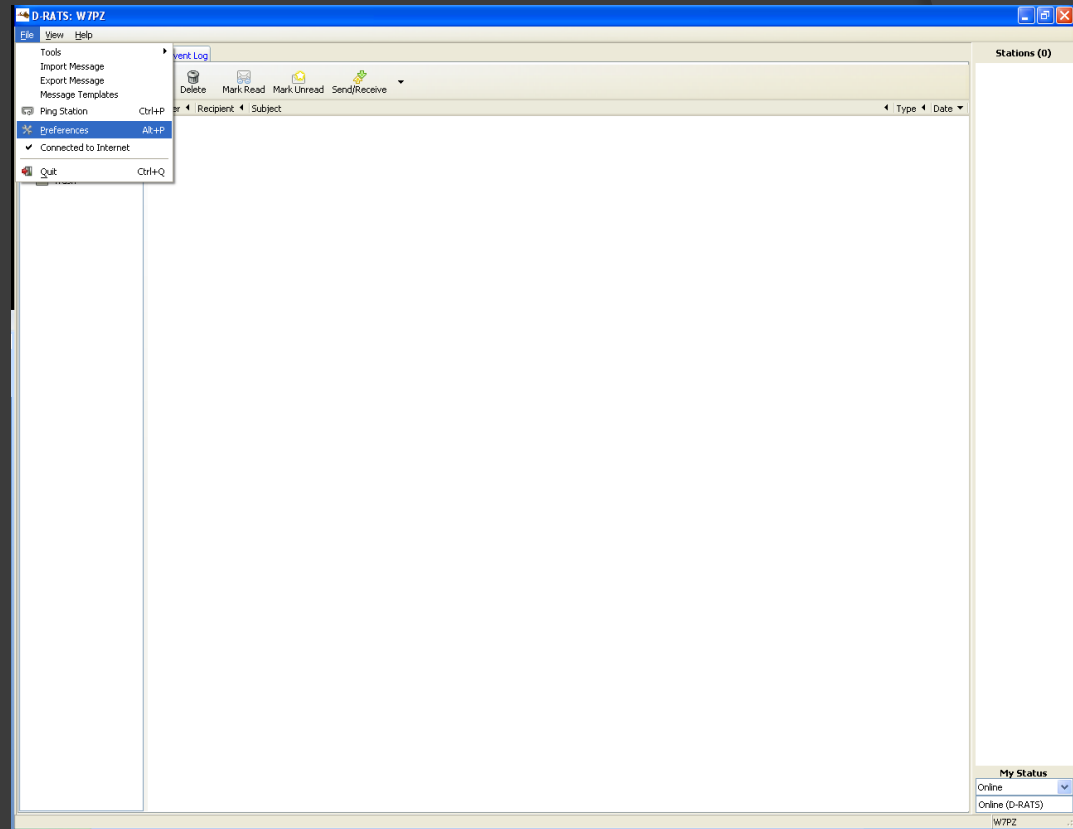
- D-RATS Functions

- Messaging
- Chat
- File Transfer
- Event Log
- Mapping/Position Reporting

- Works over Internet or with D-STAR radio

# Getting Started with D-Rats

- Download and install latest version found at <http://www.dstarinfo.com/drats.aspx>
- If you are running a 64-bit PC, also download **lzhuf\_1.exe** and copy to /D-RATS/libexec folder
- File/Preferences or Alt [P] to open configuration window



# Setup – General Info

- Fill in callsign and name
- Callsign may be tactical callsign for EmComm use
- FCC callsign transmitted by D-STAR radio

**Config**

Preferences

- Paths
- GPS
- Appearance
- Chat
- Sounds
- Messages

Radio

- Transfers

Network

- TCP Gateway
- TCP Forwarding
- Outgoing Email
- Email Accounts
- Email Access

Callsign: W7PZ

Name: Pat

Sign-on Message:  Enabled Online (D-RATS)

Sign-off Message:  Enabled Going offline (D-RATS)

Units: Imperial

Show time in UTC:  Enabled

Ping reply: |

Language: English

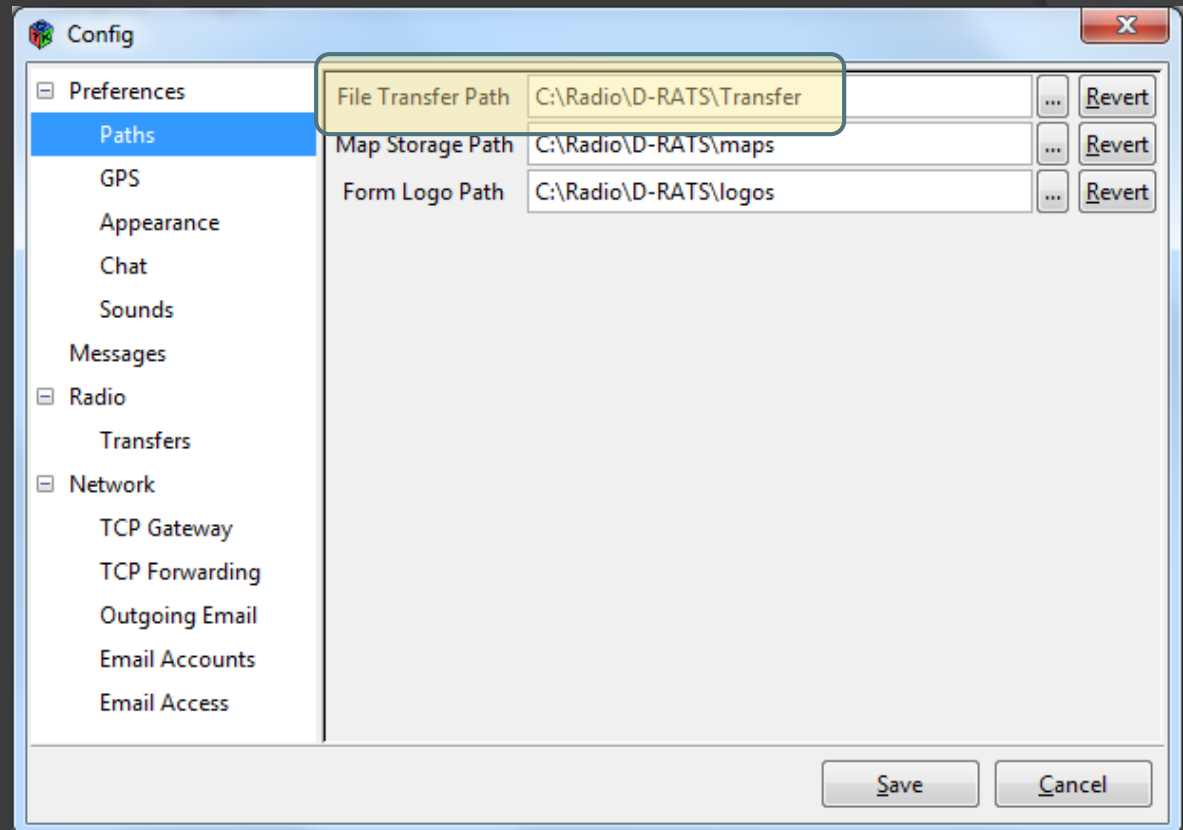
Blink tray on

- Incoming Messages:  Enabled
- New Chat Messages:  Enabled
- Incoming Files:  Enabled
- Received Events:  Enabled

Save Cancel

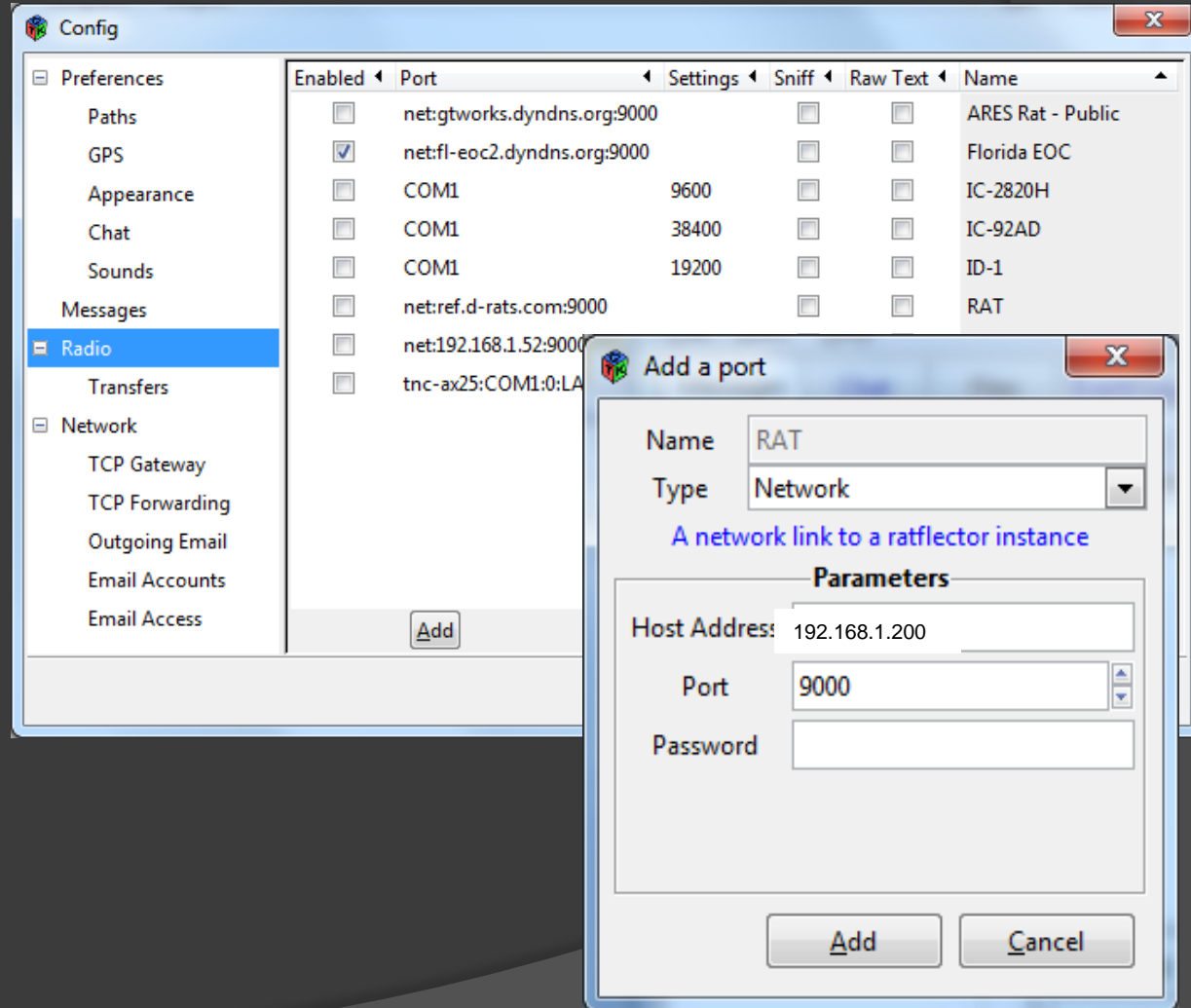
# Setup - Paths

- Designate path to folder for sharing files
- Can be viewed by remote stations for unattended file transfer
- No other folders or files visible to other stations



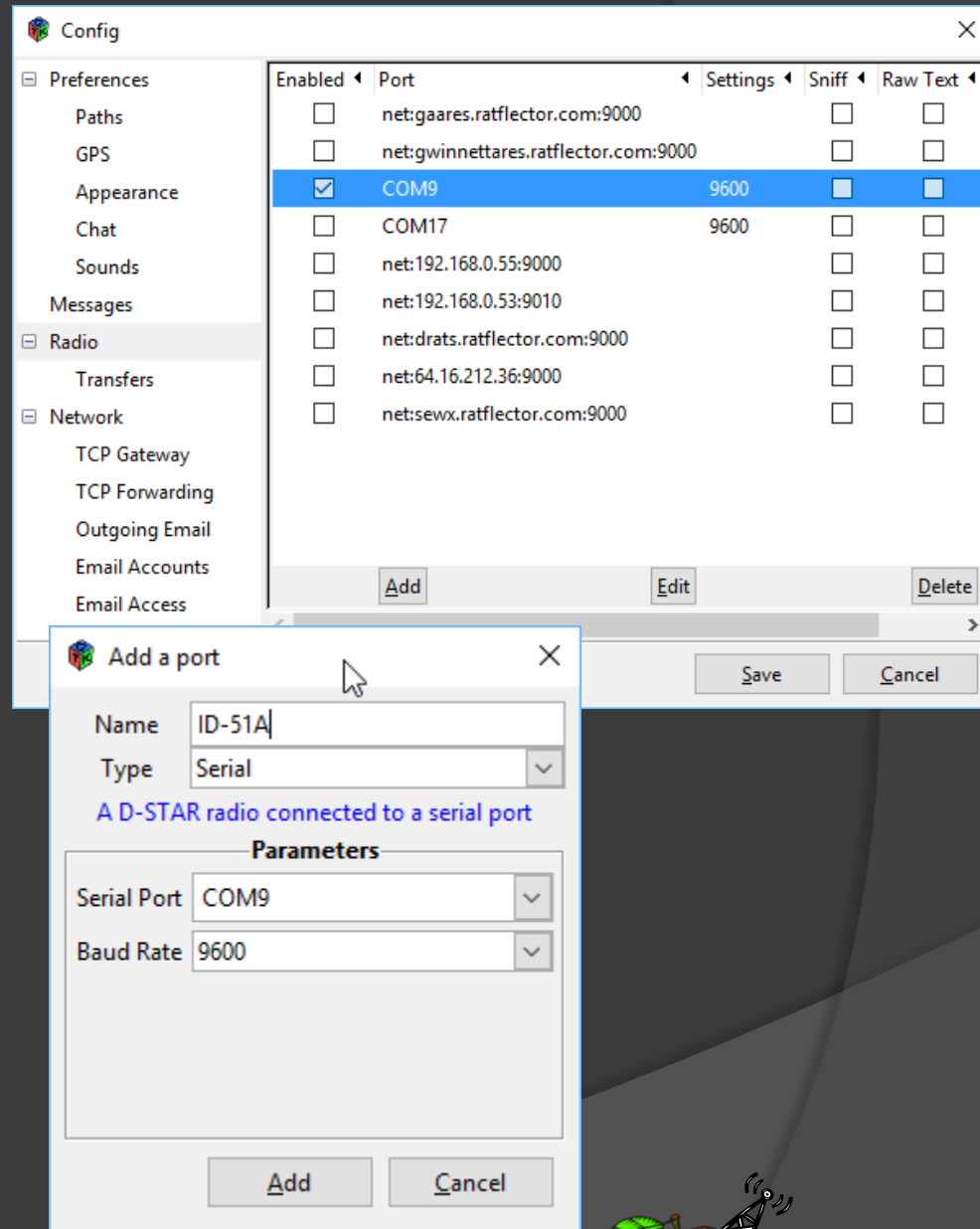
# Connect via Internet

- Connect Wi-Fi to **GARS** (no password)
- Create path for connection to local Ratreflector
- Select File > Preferences > Radio
- Select Add
- On “Add a port”, select Type > Network
- Enter **192.168.1.150**, Port 9000, select Add
- Check Enabled box for net:192.168.1.150



# Connect via RF

- Connect using any model of D-STAR radio using data cable
- Set radio to 441.0000 simplex, DV mode
- Refer to Radio Settings in **Getting Started with D-RATS** document to configure radio (see handout)
- Determine COM port used by data cable, radio
- Add RF path in Preferences > Radio and Save
- Only have that line checked



# D-RATS Radio Settings

Radio	Rate	Radio settings required for D-RATS functions
ID-51 Plus (Fast Data)	9600	Note: Fast Data only works with another ID-51A Plus or ID-5100A with firmware update) GPS>GPS SET>GPS Select>OFF, GPS>GPS TX Mode = OFF, GPS>GPS Auto TX = OFF, GPS>GPS Set>GPS Out = OFF, DV Set>DV Data TX = Auto, DV SET>DV Fast Data>Fast Data>ON, Function>CI-V>CI-V (Data Jack)>OFF
ID-51 Plus (Slow Data)	9600	GPS>GPS SET>GPS Select>OFF, GPS>GPS TX Mode = OFF, GPS>GPS Auto TX = OFF, GPS>GPS Set>GPS Out = OFF, DV Set>DV Data TX = Auto, DV SET>DV Fast Data>Fast Data>OFF, Function>CI-V>CI-V (Data Jack)>OFF
ID-31A/51A (Standard Edition)	9600	GPS>GPS SET>GPS Select>OFF, GPS>GPS TX Mode = OFF, GPS>GPS Auto TX = OFF, GPS>GPS Set>GPS Out = OFF, DV Set>DV Data TX = Auto,
ID-5100A	9600	Using a Data Cable: Function>Data Speed=9600, DV Set>DV Data TX=Auto,
IC-7100A	9600	Using a USB Cable: GPS>GPS Select=OFF, GPS>GPS TX Mode=OFF, GPS>GPS Auto TX=OFF, Connectors>USB2/DATA1Function>USB2 Function=DV Data, Connectors>USB2/Data1 Function>GPS Out=OFF, Connectors>USB2/Data1 Function>DV Data/GPS Out Baud=9600 Using a Data Cable: GPS>GPS Select=OFF, GPS>GPS TX Mode=OFF, GPS>GPS Auto TX=OFF, Connectors>USB2/DATA1Function>Data1 Function=DV Data, Connectors>USB2/Data1 Function>GPS Out=OFF, Connectors>USB2/Data1 Function>DV Data/GPS Out Baud=9600
IC-80AD	9600	DATATX = AUTO, GPS-TX = OFF, GPS.ATX = OFF
IC-U82	9600	ATX = ATXON, SPD = SPD96
IC-V82	9600	ATX = ATXON, SPD = SPD96
IC-91AD	38400	DV DATA TX = AUTO, GPS TX = DISABLED, GPS AUTO TX = OFF
IC-92AD	38400	DV DATA TX = AUTO, GPS TX = DISABLED, GPS AUTO TX = OFF
IC-2200	9600	ATX = ATXON, SPD = SPD96
IC-2820	9600	DV DATA TX = AUTO, GPS TX = DISABLED, GPS AUTO TX = OFF, UT123 must be installed
ID-800H	9600	DVT = DVTAT, SPD = SPD96
ID-880H	9600	DATATX = AUTO, GPS-TX = OFF, GPS.ATX = OFF
ID-1	19200	DV DATA TX = AUTO, Cannot use PC application



# Let's use D-RATS

# Setup Gwinnett ARES Ratreflector

- Create path for internet connection to Ratreflector
- Select File > Preferences > Radio
- Select Add
- On “Add a port”, select Type > Network
- Enter [gwinnettares.ratreflector.com](http://gwinnettares.ratreflector.com), Port 9000, select Add
- Check Enabled box for [net:gwinnettares.ratreflector.com](http://net:gwinnettares.ratreflector.com)
- For RF, connect via WD4STR C

