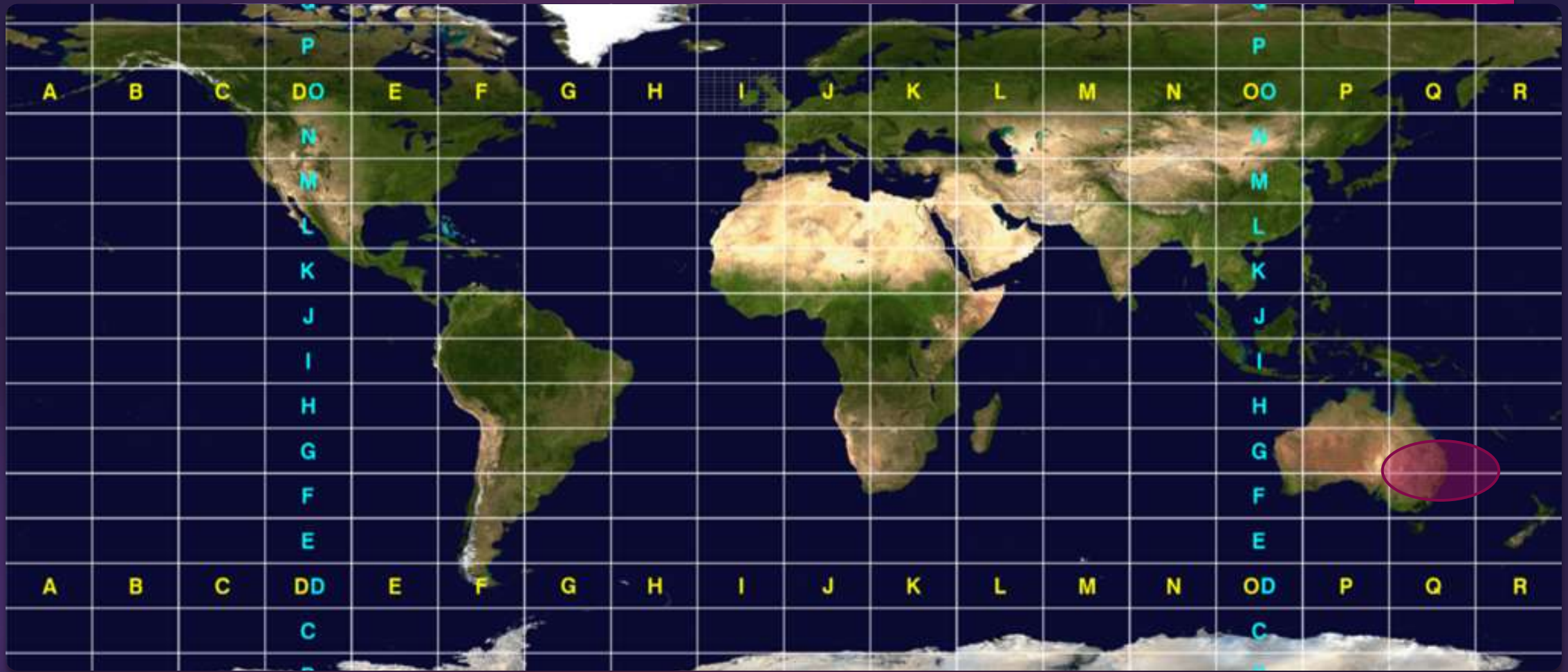




# International Grid Square Chase & LOTW

GARS – 2018

DE ND4V

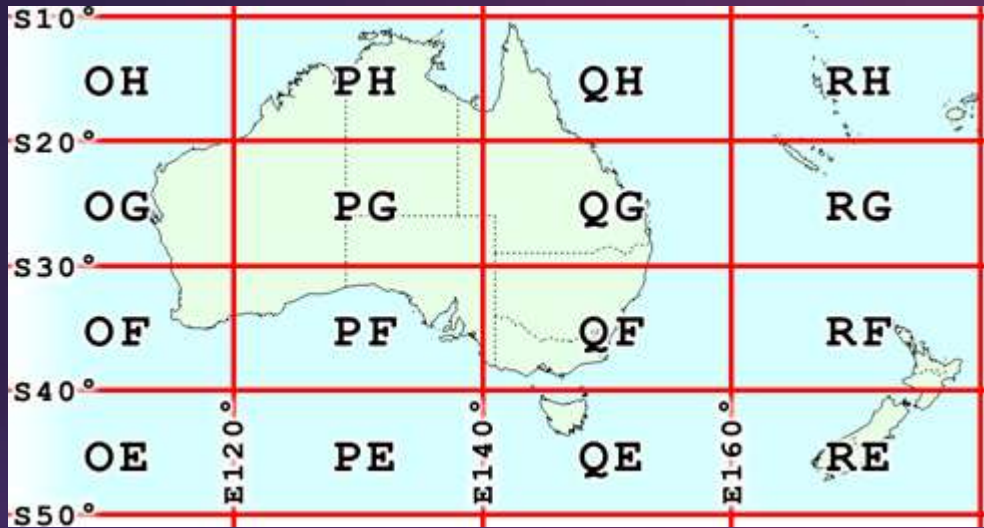


## What is a grid square

18 x 18 of the 2 letter grids = 324 (10 degrees latitude x 20 degrees longitude)

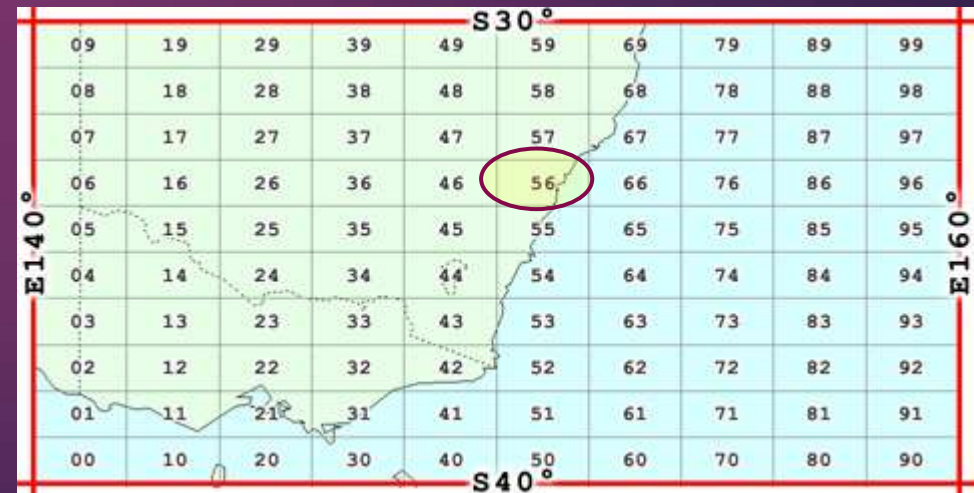
324 x 100 sub squares = 32,400 4 letter grid squares (1 degree x 2 degrees)

# The 2 letter and 4 letter sub-square



Sydney AUS is QF56

Norcross is EM73



# Where is WALDO?

- ▶ [http://www.levinecentral.com/ham/grid\\_square.php](http://www.levinecentral.com/ham/grid_square.php)
- ▶ Google GRID SQUARE LOCATOR

# CQ GRID SQUARE

The screenshot displays the WSJT-X v1.8.0 software interface. The main window shows a waterfall plot with frequency from 600 to 2600 kHz. A QSO log window is open, showing a list of contacts. The current contact is CQ ND4V EM73. The control panel on the right shows the frequency set to 14074.000 kHz and the mode set to FT8. The status bar at the bottom indicates the current time is 2018 Jan 12 19:27:35.

**QSO Log Window:**

UTC	dB	DT	Freq	Message
192615	-18	0.5	2283	WA9WSJ YV5EN FR60
192615	-8	-0.6	2515	3DA0AY K4MS EM93
192615	14	0.5	1809	K4ELI VA2LC 73
192645	0	1.7	2128	ND4V 3DA0AY RRR
192645	-15	0.5	417	VE3V8A KB7AK CN85
192645	-3	0.6	525	VE3S1D KP0JB DM79
192645	3	0.5	644	LA1PHA K7DTS DM41
192645	-17	0.5	757	CQ ND4C EM16 ~U.S.A.
192645	-8	0.4	933	EF4AC EA0CXN RR73
192645	-4	0.4	1181	DE W4/PI2JOC R-06
192645	-5	0.5	1273	EJ4KVC AA6TQ -03
192645	-15	0.5	1440	W4JNC MN7F 73
192645	-8	0.4	2283	WA9WSJ YV5EN R-12
192645	-1	-0.6	2515	3DA0AY K4MS EM93
192645	-9	1.3	2121	K91J K7UWR 73
192645	-16	0.5	2392	CQ ND4V LP04 180 Aussie

**Control Panel:**

- Frequency: 14074.000
- Mode: FT8
- Power: 30 W for amp
- Bandwidth: 2.7K
- Filter: 2.4K
- Notch: 3.3K
- Notch Width: 4.0K
- RF Power: 30 W
- SWR: 1.0
- Level: 0
- Compression: 0
- MIC: +ACC
- PROC: DAX
- MON: 0
- TX ready: 01/12/18 19:27:35Z

# What's the object of the game?

Work as many grids on as many bands as possible! EACH MONTH



# UPLOAD your contact to LOTW and for each match you get 1 point

- ▶ Your monthly progress is tracked automatically (updated several times a day) at
  - ▶ <https://igc.arrl.org/leader-board.php>
  - ▶ Demo the website
- ▶ At the end of the year, the monthly totals will be combined and your overall finish determined. Certificates ? Probably!

# What is this Logbook of the World ?

## How do I get in?

- ▶ LOTW is a secure website where one uploads an encrypted file.
- ▶ LOTW compares your file with every other file that has been loaded and tells you when you have a match
- ▶ These matches are just like QSL cards and can be used to claim awards – DXCC, WAS, VUCC, CQ WPX, and coming soon CQ WAZ
- ▶ The primary advantages are the savings in postage and time.

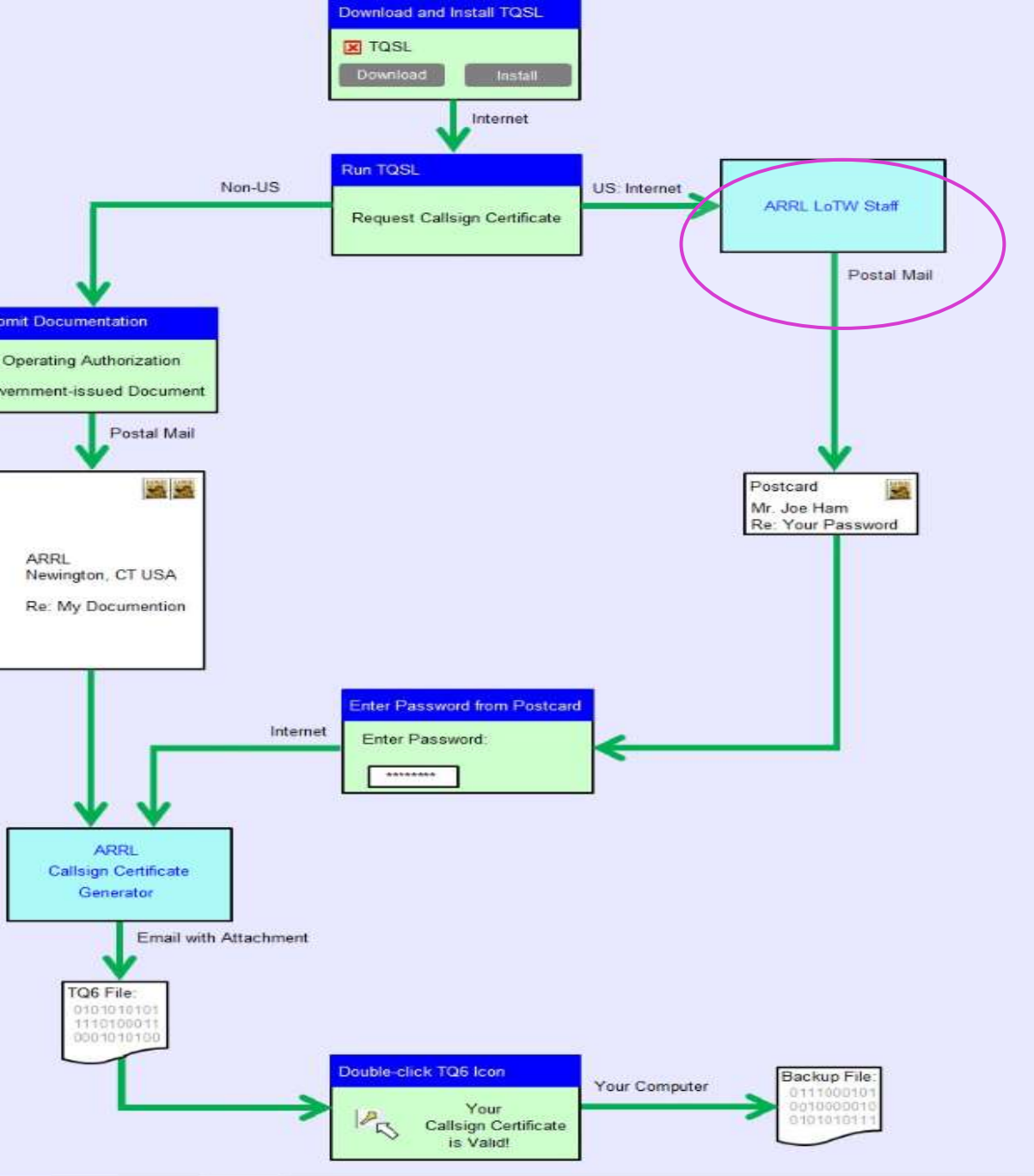


# LOTW and your logging program

- ▶ Many logging programs have automated the upload process
- ▶ LOTW also allows one to download the QSL's
- ▶ Many logging programs have also automated the download process.
- ▶ Facilitates award tracking

# Did I mention that LOTW is a secure website?

- ▶ A program called Trusted QSL (TQSL) is required to be on your computer. GET IT HERE ...
- ▶ <http://www.arrl.org/tqsl-download> (I found it with google)
- ▶ STEP 2 – START TQSL AND REQUEST A NEW CERTIFICATE



<https://lotw.arrl.org/lotw-help/getting-started-chart/>

TQSL

File Station Location **Callsign Certificate** Help

Log Operations Station Locations **Callsign Certificates**

Station Locations

- ND4V
  - ND4V
- W4GR
  - Abbot's Bridge
  - Field Day W4GR
  - GARS
  - GARS EAA
  - GARS EM84 Bogen Park

Select a Station Location to process

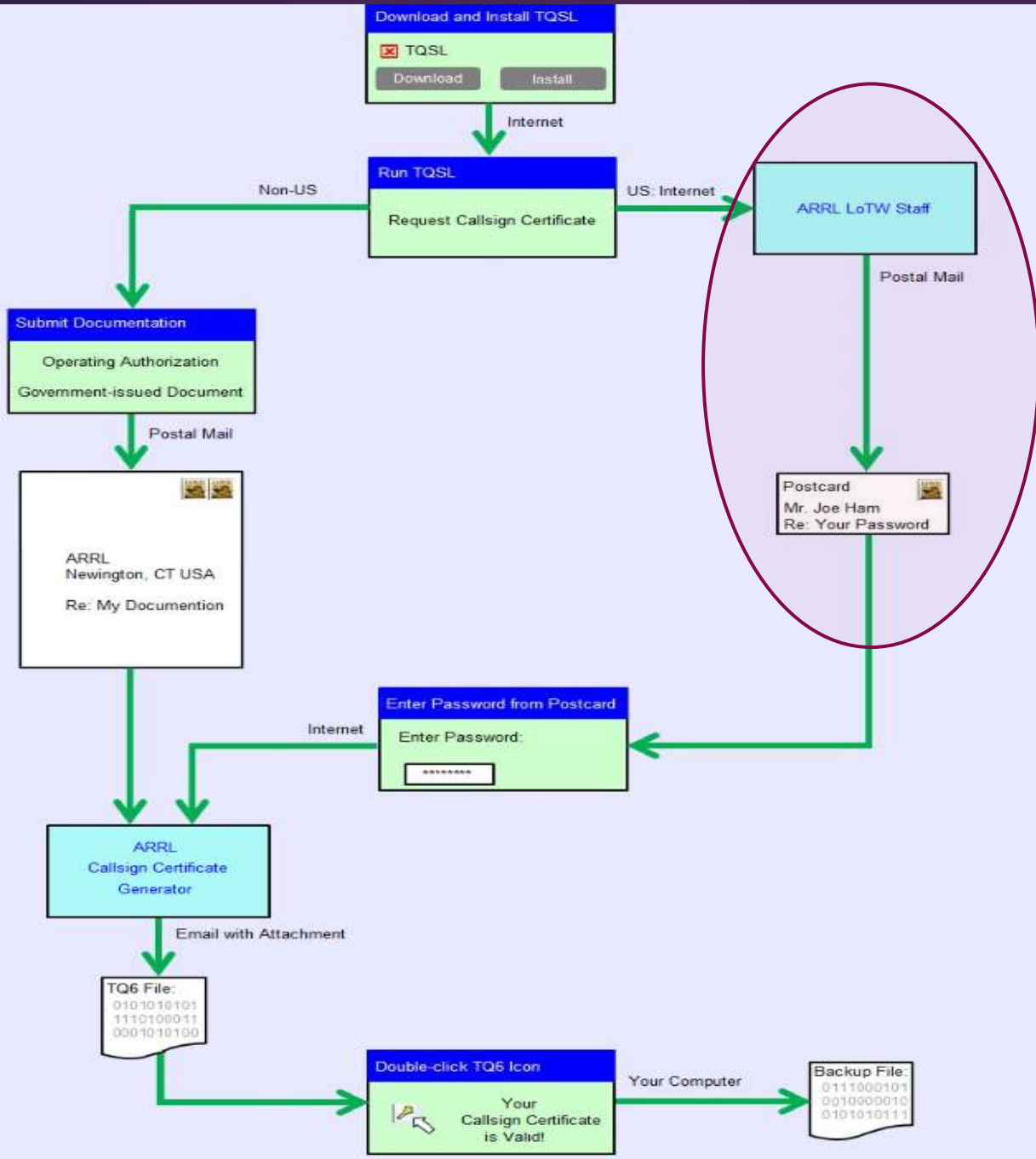
Create a new Station Location

Edit a Station Location

Delete a Station Location

Display Station Location Properties

Status Log



<https://lotw.arrl.org/lotw-help/getting-started-chart/>

NEW → [www.lotw.arrl.org/lotw/PASSWORD](http://www.lotw.arrl.org/lotw/PASSWORD)



**Logbook of the World**  
American Radio Relay League  
225 Main St  
Newington, CT 06111



U.S. POSTAGE PITNEY BOWES  
ZIP 06111 \$ 000.32<sup>0</sup>  
Q2 1W  
0001374686 JAN 09 2013

old → <https://p1k.arrl.org/lotw/PASSWORD>

8VMVF5YZ

Batch # = 20130109141526 W4GR  
ATTENTION: JOHN R ACKERMANN  
GWINNETT AMATEUR RADIO SOCIETY  
PO BOX 88  
LILBURN GA 30048



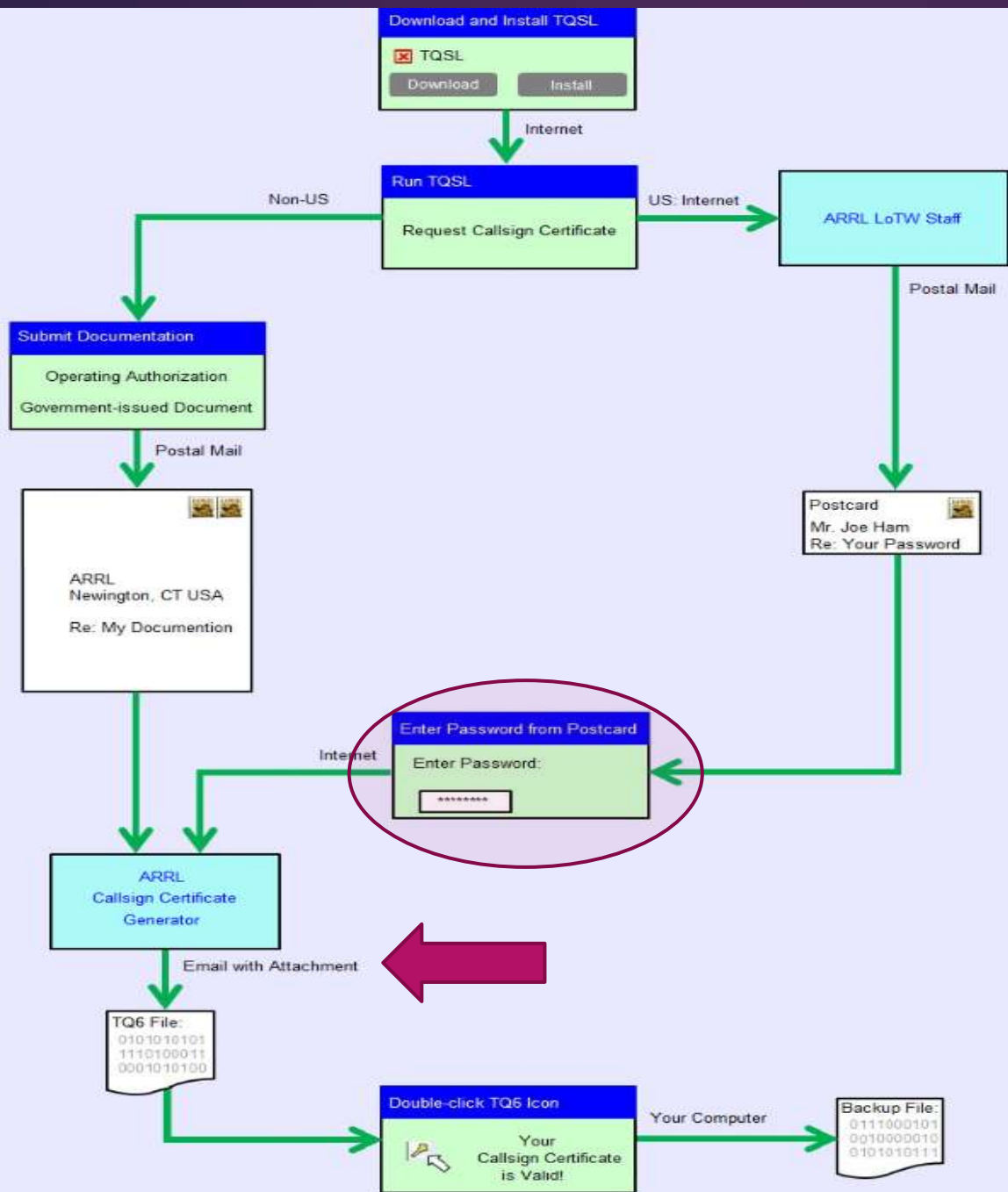
#### Logbook of the World

Thanks for registering to use Logbook of the World. In order to continue, you must visit the LoTW Web site at <https://p1k.arrl.org/lotw/password> and enter your postcard password. This password is the eight-character group printed above the address on the front of this card. Enter it exactly as printed.

If you cannot read the password please call 860-594-0295 and ask for a new postcard to be sent. We will not reveal the password over the telephone. The postcard must be sent to the address listed with the FCC for your call sign.

If you enter your password, but it is not accepted, please verify that you have correctly read and entered the password. If it still does not work, you may send an email to [lotw-help@arrl.org](mailto:lotw-help@arrl.org) alerting us, or call 860-594-0295.

Having successfully entered your password, you will receive your certificate as an email attachment within three business days.



<https://lotw.arrl.org/lotw-help/getting-started-chart/>

### - Instructions

Use the following instructions to set up your LOTW account, brought to you by [ARRL](#).

---

#### + Step 1 - Download and install the software

---

#### + Step 2 - Request a certificate for your callsign

---

#### + Step 3 - Authenticate your location (USA)

---

#### + Step 3 - Authenticate your location (non-USA)

---

#### + Step 4 - Accept Your Call Sign Certificate (TQ6 file)

---

#### + Step 5 - Create a station location

---

#### + Step 6 - Sign Upload Your Log Files via the Internet

---



# Quick demo of LOTW

- ▶ Check LOTW for new QSLs
- ▶ UPLOAD TQ8
- ▶ RE-Check for New QSLs