



# Programming Your Radio

JOHN DAVIS  
WB4QDX



# Decisions, Decisions

- ▶ Mobile or portable/HT?
- ▶ What type of radio am I programming (FM, D-STAR, Fusion, DMR, NXDN, P25)?
- ▶ Front panel programming versus programming software?
- ▶ How many memories do I need?

# Mobile vs Portable Considerations

- ▶ How many memories do I need?
- ▶ Can I store and select different memory loads?
- ▶ How easy is it to change memories?
- ▶ How do I want to organize memories (banks, areas, bands)?
- ▶ Same memory order for portable and mobile



# Front Panel vs Programming Software

- ▶ *You should always know how to program directly on the radio for fast changes and quick additions in the field*
- ▶ Initial setup is easiest with programming software
  - ▶ Requires programming cable
  - ▶ Software allows easy changes and additions
  - ▶ Easy to save multiple versions
  - ▶ Keeps backup copies
- ▶ Free and purchased programming software available

# Basic Programming for FM

- ▶ What I need to know for programming
  - Output frequency of repeater
  - Duplex direction (+ or -)
  - Offset (usually 600KHz for 2m/5 MHz for 70cm)
  - Tone frequency (Hz)
  - Tone on TX or tone squelch (TSQ)



# Basic Programming for D-STAR

- ❑ What I need to know for programming
  - Output frequency of repeater
  - Duplex direction (+ or -)
  - Offset (usually 600KHz for 2m/5 MHz for 70cm)
  - ~~Tone frequency (Hz)~~
  - ~~Tone on TX or tone squelch (TSQ)~~
- ❑ Plus
  - My callsign
  - Local repeater callsign
  - Module (B for UHF, C for VHF)

OR

- ❑ Enter own callsign
- ❑ Turn on GPS
- ❑ Nearest Repeater



# Basic Programming for Fusion

- ▶ What I need to know for programming
  - Output frequency of repeater
  - Duplex direction (+ or -)
  - Offset (usually 600KHz for 2m/5 MHz for 70cm)
  - Tone frequency (Hz) for FM
  - Tone on TX or tone squelch (TSQ) for FM
- Plus
  - Change mode to DN or DW (digital narrow or wide) for C4FM digital mode



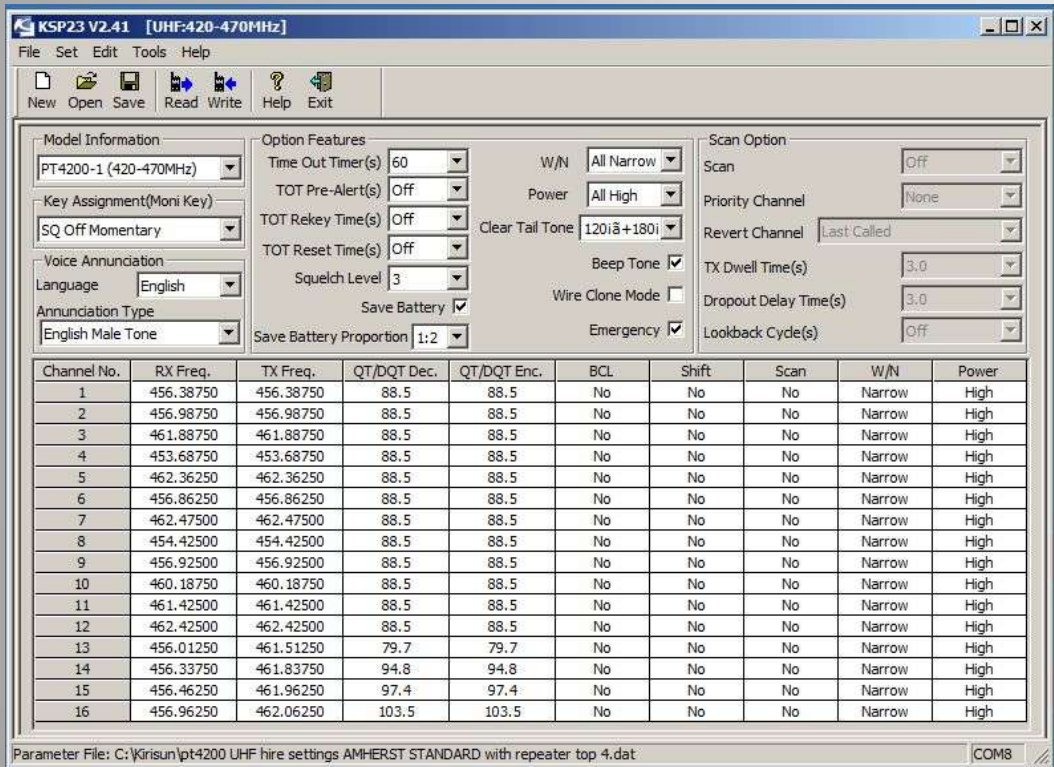
# Basic Programming for DMR

- ❑ What I need to know for programming
  - Output frequency of repeater
  - Duplex direction (+ or -)
  - Offset (usually 600KHz for 2m/5 MHz for 70cm)
  - ~~Tone frequency (Hz)~~
  - ~~Tone on TX or tone squelch (TSQ)~~
- ❑ Plus
  - Color code
  - Talkgroup number by repeater
  - Create Zone





# Programming Software



- ▶ **Free software** (still need programming cable)
  - ▶ Chirp (available for most radios)
  - ▶ Some manufacturers (usually for specific models)
- ▶ **Purchased Software**
  - ▶ RT Systems
    - ▶ reasonably priced
    - ▶ allows easy copying from one radio to another
  - ▶ Sells programming cables

